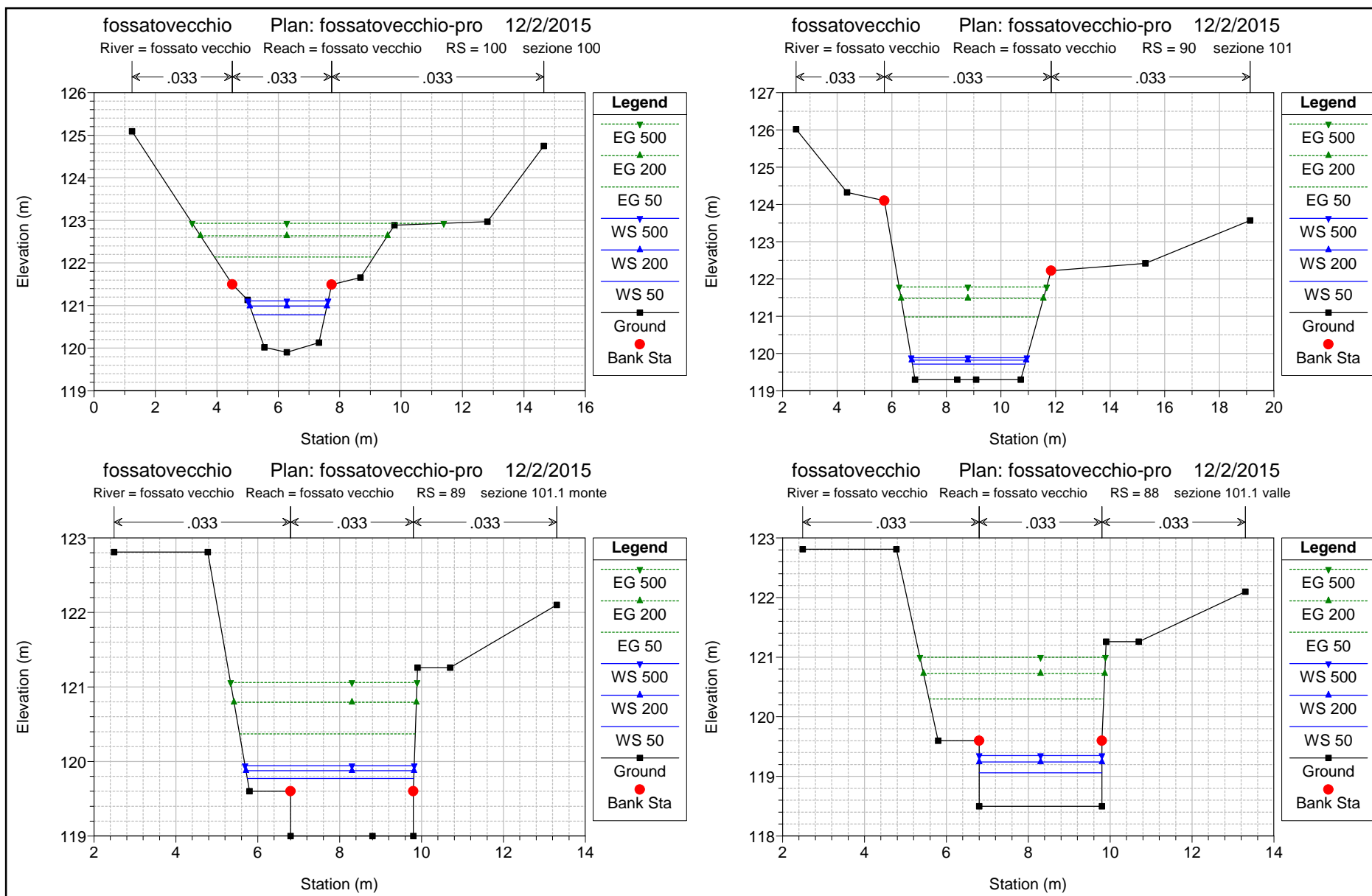
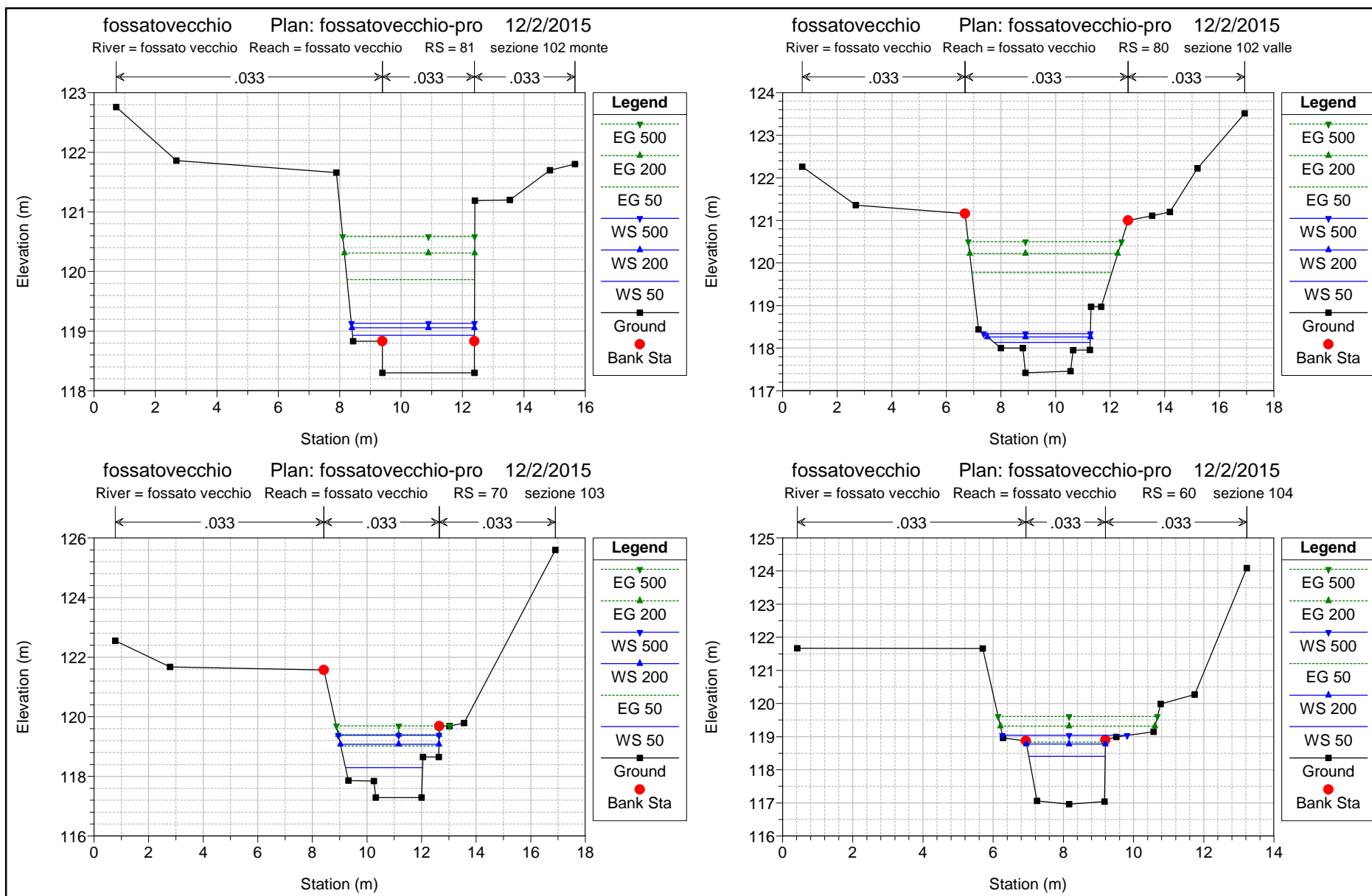


HEC-RAS Plan: fosvec-att River: fossato vecchio Reach: fossato vecchio

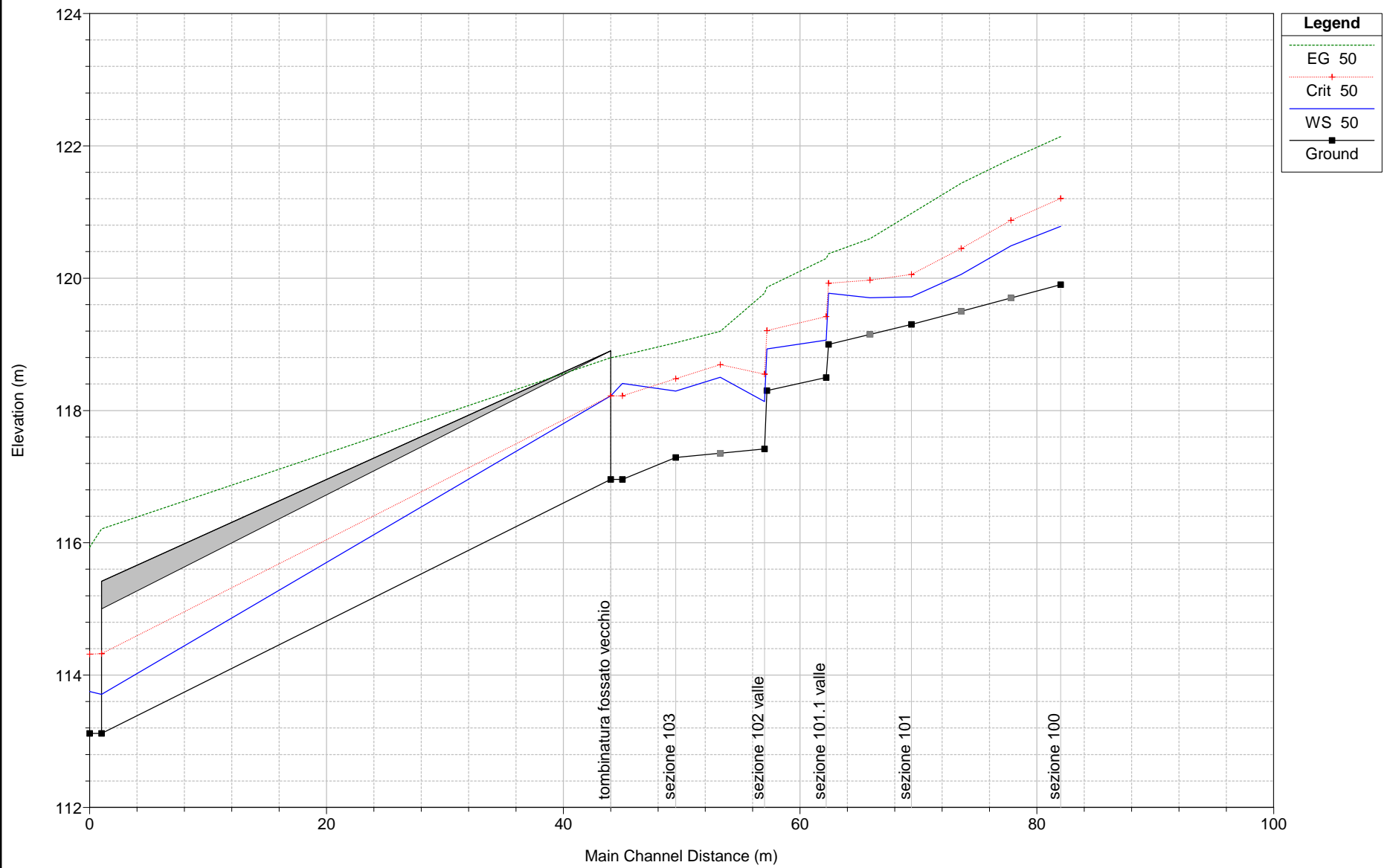
Reach	River Sta	Profile	Q Total	Min Ch El	W.S. Elev	Crit W.S.	E.G. Elev	E.G. Slope	Vel Chnl	Flow Area	Top Width	Froude # Chl
			(m3/s)	(m)	(m)	(m)	(m)	(m/m)	(m/s)	(m2)	(m)	
fossato vecchio	100	50	8.30	119.90	120.78	121.20	122.14	0.077024	5.17	1.61	2.35	1.99
fossato vecchio	100	200	12.00	119.90	120.99	121.51	122.64	0.077047	5.69	2.11	2.51	1.99
fossato vecchio	100	500	14.50	119.90	121.11	121.73	122.93	0.077127	5.98	2.43	2.61	1.98
fossato vecchio	90	50	8.30	118.97	119.73	120.09	121.01	0.086610	5.01	1.66	3.45	2.31
fossato vecchio	90	200	12.00	118.97	119.86	120.31	121.50	0.091533	5.68	2.11	3.72	2.40
fossato vecchio	90	500	14.50	118.97	119.93	120.44	121.79	0.094179	6.04	2.40	3.88	2.45
fossato vecchio	81	50	8.30	117.92	118.72	119.05	119.83	0.090747	4.66	1.78	3.69	2.14
fossato vecchio	81	200	12.00	117.92	118.85	119.25	120.27	0.094016	5.29	2.27	3.93	2.22
fossato vecchio	81	500	14.50	117.92	118.93	119.38	120.55	0.096528	5.65	2.57	4.07	2.27
fossato vecchio	80	50	8.30	117.42	118.14	118.55	119.75	0.158514	5.63	1.47	3.52	2.78
fossato vecchio	80	200	12.00	117.42	118.27	118.75	120.20	0.146633	6.16	1.95	3.77	2.74
fossato vecchio	80	500	14.50	117.42	118.34	118.88	120.48	0.142741	6.47	2.24	3.91	2.73
fossato vecchio	70	50	8.30	117.29	118.30	118.48	119.02	0.041580	3.77	2.20	2.82	1.36
fossato vecchio	70	200	12.00	117.29	119.08	118.80	119.40	0.011351	2.54	4.73	3.61	0.71
fossato vecchio	70	500	14.50	117.29	119.38	118.94	119.69	0.009212	2.48	5.84	3.69	0.63
fossato vecchio	60	50	8.30	116.96	118.41	118.22	118.83	0.017406	2.89	2.87	2.18	0.80
fossato vecchio	60	200	12.00	116.96	118.77	118.55	119.32	0.019289	3.26	3.68	2.25	0.81
fossato vecchio	60	500	14.50	116.96	119.04	118.75	119.61	0.017813	3.37	4.39	3.56	0.78
fossato vecchio	55		Bridge									
fossato vecchio	50	50	8.30	113.12	113.75	114.32	115.93	0.164890	6.54	1.27	2.01	2.63
fossato vecchio	50	200	12.00	113.12	113.98	114.65	116.42	0.144517	6.91	1.74	2.01	2.37
fossato vecchio	50	500	14.50	113.12	114.14	114.86	116.69	0.135468	7.08	2.05	2.01	2.24

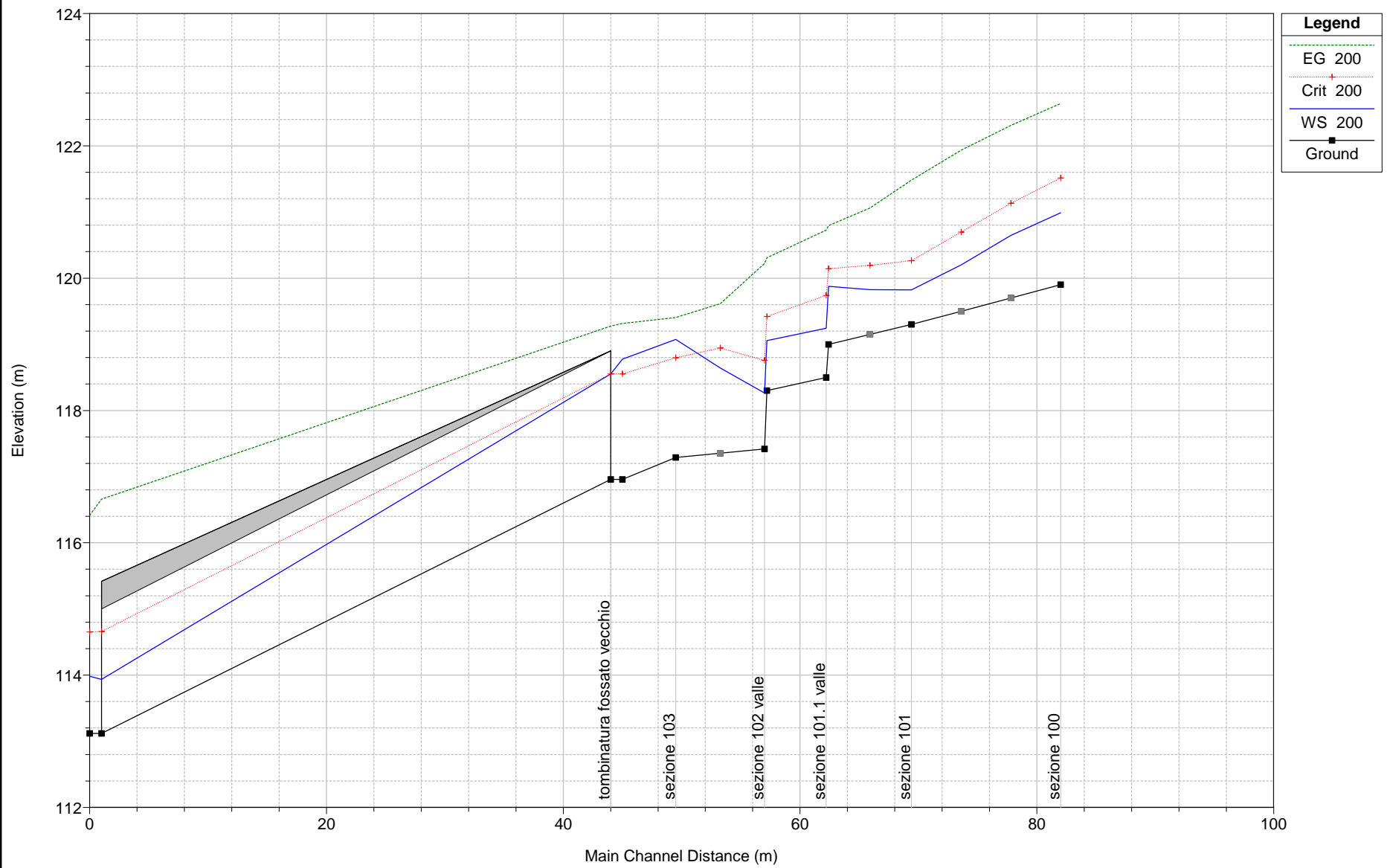


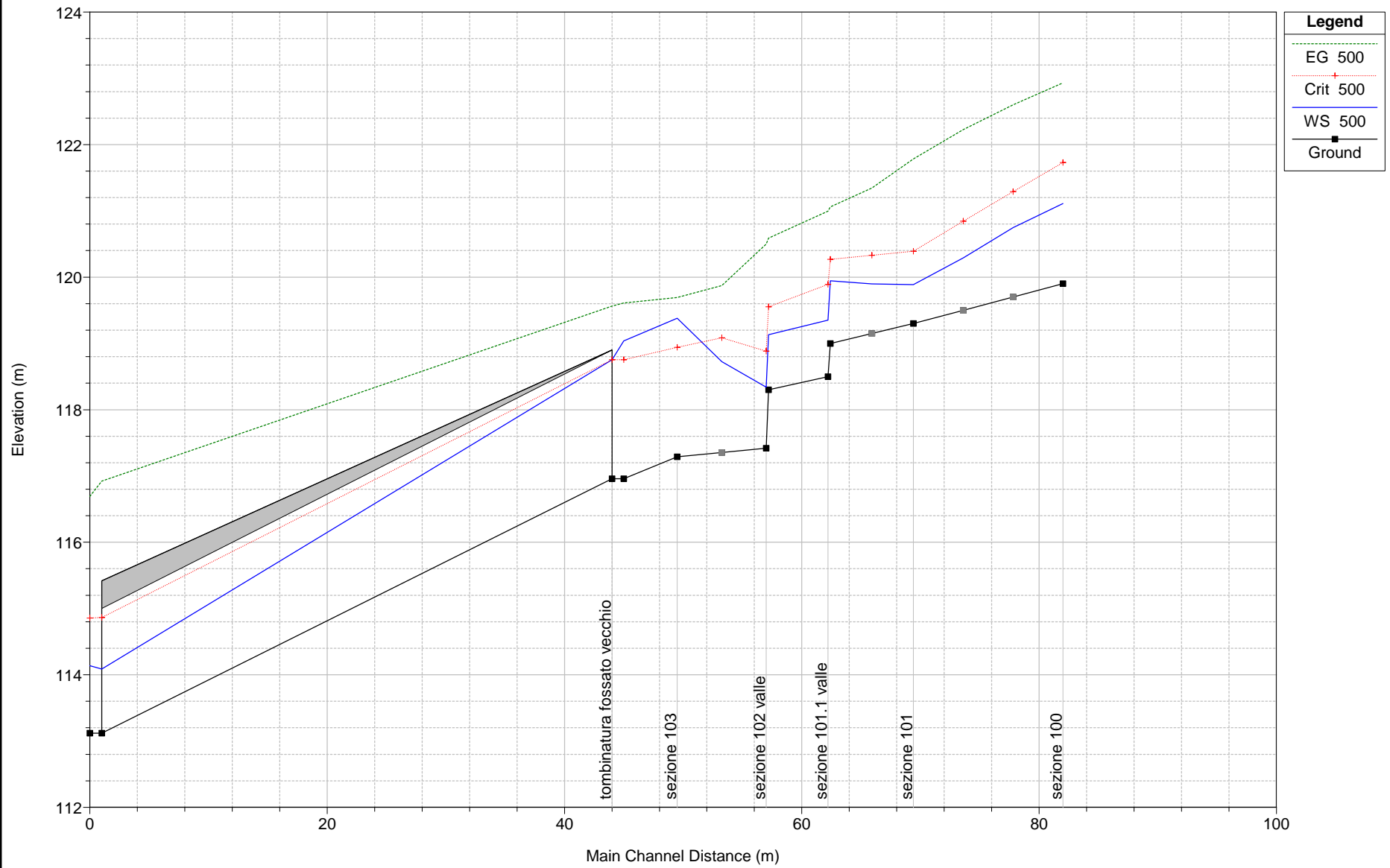












HEC-RAS Plan: fos-vec-pro River: fossato vecchio Reach: fossato vecchio

Reach	River Sta	Profile	Q Total	Min Ch El	W.S. Elev	Crit W.S.	E.G. Elev	E.G. Slope	Vel Chnl	Flow Area	Top Width	Froude # Chl
			(m3/s)	(m)	(m)	(m)	(m)	(m/m)	(m/s)	(m2)	(m)	
fossato vecchio	100	50	8.30	119.90	120.78	121.20	122.14	0.077024	5.17	1.61	2.35	1.99
fossato vecchio	100	200	12.00	119.90	120.99	121.51	122.64	0.077047	5.69	2.11	2.51	1.99
fossato vecchio	100	500	14.50	119.90	121.11	121.73	122.93	0.077127	5.98	2.43	2.61	1.98
fossato vecchio	90	50	8.30	119.30	119.72	120.06	120.98	0.108613	4.97	1.67	4.13	2.50
fossato vecchio	90	200	12.00	119.30	119.82	120.26	121.48	0.111634	5.71	2.10	4.19	2.57
fossato vecchio	90	500	14.50	119.30	119.89	120.39	121.78	0.112283	6.10	2.38	4.23	2.60
fossato vecchio	89	50	8.30	119.00	119.77	119.92	120.37	0.029041	3.47	2.49	4.06	1.26
fossato vecchio	89	200	12.00	119.00	119.88	120.14	120.79	0.038227	4.33	2.92	4.10	1.48
fossato vecchio	89	500	14.50	119.00	119.94	120.27	121.06	0.042388	4.79	3.19	4.13	1.58
fossato vecchio	88	50	8.30	118.50	119.06	119.42	120.30	0.087036	4.92	1.69	3.00	2.10
fossato vecchio	88	200	12.00	118.50	119.24	119.74	120.72	0.080648	5.39	2.22	3.00	2.00
fossato vecchio	88	500	14.50	118.50	119.35	119.89	121.00	0.079517	5.68	2.55	3.00	1.97
fossato vecchio	81	50	8.30	118.30	118.93	119.21	119.86	0.055822	4.31	1.99	3.97	1.73
fossato vecchio	81	200	12.00	118.30	119.06	119.42	120.31	0.060113	5.05	2.49	4.00	1.85
fossato vecchio	81	500	14.50	118.30	119.13	119.55	120.59	0.062140	5.46	2.79	4.01	1.91
fossato vecchio	80	50	8.30	117.42	118.13	118.55	119.77	0.162023	5.67	1.46	3.52	2.81
fossato vecchio	80	200	12.00	117.42	118.26	118.76	120.22	0.148991	6.20	1.94	3.76	2.76
fossato vecchio	80	500	14.50	117.42	118.34	118.88	120.50	0.145128	6.51	2.23	3.91	2.75
fossato vecchio	70	50	8.30	117.29	118.29	118.48	119.03	0.042275	3.79	2.19	2.82	1.37
fossato vecchio	70	200	12.00	117.29	119.08	118.80	119.40	0.011351	2.54	4.73	3.61	0.71
fossato vecchio	70	500	14.50	117.29	119.38	118.94	119.69	0.009212	2.48	5.84	3.69	0.63
fossato vecchio	60	50	8.30	116.96	118.41	118.22	118.83	0.017406	2.89	2.87	2.18	0.80
fossato vecchio	60	200	12.00	116.96	118.77	118.55	119.32	0.019289	3.26	3.68	2.25	0.81
fossato vecchio	60	500	14.50	116.96	119.04	118.75	119.61	0.017813	3.37	4.39	3.56	0.78
fossato vecchio	55		Bridge									
fossato vecchio	50	50	8.30	113.12	113.75	114.32	115.93	0.164890	6.54	1.27	2.01	2.63

HEC-RAS Plan: fos-vec-pro River: fossato vecchio Reach: fossato vecchio (Continued)

Reach	River Sta	Profile	Q Total	Min Ch El	W.S. Elev	Crit W.S.	E.G. Elev	E.G. Slope	Vel Chnl	Flow Area	Top Width	Froude # Chl
			(m3/s)	(m)	(m)	(m)	(m)	(m/m)	(m/s)	(m2)	(m)	
fossato vecchio	50	200	12.00	113.12	113.98	114.65	116.42	0.144517	6.91	1.74	2.01	2.37
fossato vecchio	50	500	14.50	113.12	114.14	114.86	116.69	0.135468	7.08	2.05	2.01	2.24